

THE TOOTH FAIRY
Technical Requirements Rider
Old Trout Puppet Workshop

9/14/10



Technical Contact:

Cimmeron Meyer
403-618-9212
403-508-4929
cim@theoldtrouts.org

Producing Agent:

Grant Burns
grant@theoldtrouts.org
403-863-7763

Touring Company (6):

5 puppeteers
1 Lighting Director/Stage Manager

The presenter will provide each member of the touring company with single occupancy accommodation from the start date of the contract until the end of engagement.

Running Time:

60 mins.

Stage Requirements:

Proscenium staging preferred. Minimum Stage area is 24 feet deep and 24 feet wide. Minimum grid Height is 16 feet. An upstage crossover is required.

THE TOOTH FAIRY
Technical Requirements Rider
Old Trout Puppet Workshop

9/14/10

SET DESCRIPTION:

The set consists of a wooden structure with an upper level. On the stage left side is a tower with a round window and a deep platform. There is a platform Stage right that meets a deck joining it to the tower. There are also 2 rolling set pieces that move to various positions during the show. They are 4' high, 6' wide and 1'6" deep.

STAGE FLOOR:

The floor must be exceptionally smooth and free from ridges or bumps. Great care must be taken to keep cables off the floor. The floor should be a matt black finish.

MASKING and CYCLORAMA:

Italian Masking is required to mask the side lighting booms. A minimum of 3 wings is required. A full cyclorama is required as far upstage as possible. If possible a black scrim hung downstage of the cyclorama would be wonderful however not crucial. Masking should be black velour clean and free of rips and stains.

Crate Dimensions: Storage and transport of crates to be provided by presenter.

Crate #	Contents	Length	Width	Height	Weight
1	Scenery	56"	20"	60"	200lbs
2	Scenery	56"	20"	48"	200lbs
3	Scenery	70"	29"	44"	300lbs
4 black	Puppets	32"	32"	26"	200lbs
5 blue	Puppets	32"	36"	26"	200lbs
6 long	Scenery	62"	13"	22"	250lbs
7 long	Scenery	86"	18"	12"	250lbs
8	Repair kit	14"	24"	36"	75lbs
9	Costumes	Wardrobe case			40lbs
10	Audio/SM	28"	21"	40"	200lbs

The Presenter (Venue) is responsible for providing the appropriate gear the day of load in to insure the integrity of the production of "THE TOOTH FAIRY".

THE TOOTH FAIRY
Technical Requirements Rider
Old Trout Puppet Workshop

9/14/10



LIGHTING:

The Trouts will provide a lighting director/stage manager who will run focus, call the show and operate the lighting console.

Lighting Inventory Required:

- 6 @ Source 4 Drop in Iris Kit
- 6 @ 6" 1k Fresnel with barn doors
- 60 @ Source 4 (19-36 degree) dependant on venue
- 6 @ 11'0" booms

Control Required:

Computer Lighting Console capable of 100 cues and 12 submasters.

Dimming Required:

- 61 dimmers are required for conventional stage fixtures.
- 1 dimmer required for house lights.

-62 total dimmers required

SOUND REQUIRMENTS:

The production requires a professional quality sound system for the proper presentation of the performance.

The venue head of sound will run the show.

The company requires a total of 2 mid-hi speakers of professional quality. They must be equipped with a minimum 12" and preferably 15" low/mid driver. They must be powered by a professional quality amplifier capable of delivering a minimum of 200w per channel. In addition, a bass bin and 2 monitor speakers upstage of the set are required.

The front of house system must be functioning properly and free of noise before the company arrives.

For playback 2 CD players with auto stop function and A mixing board with at minimum of 6 input channels and balanced stereo output capable of 2 separate mixes (one for house and one for monitors) are to be provided by the presenter.

THE TOOTH FAIRY
Technical Requirements Rider
Old Trout Puppet Workshop

9/14/10

TECHNICAL TIME AND PERSONNEL PROVIDED BY THE PRESENTER:

Typical hours required with a pre-hang of lighting and masking – house plots and festival plots can be incorporated.

Load-in and set up, Focus – 4 hours – 4 crew (including Head Stage Carp)

Focus/Audio Set up – 3 hours – 4 crew (including Head LX and Sound)

Cueing and Technical Rehearsal – 4 hours – Head LX and Sound

Show Call – 4 hours – Head LX and Sound

Strike/Load-out: Four (4) stage hands to strike set and load out. The same crew as load in is good. One electrician to strike gobos and gels from lighting instruments

Please note: If lighting instruments are to be struck on the same night as the set strike; a different, additional crew than the set crew must be involved.

Special Requirements:

-A safe, clean area close to or on the stage for unpacking and packing, repairs and paint touch ups of puppets for both the set-up, run and the strike.

-One and one half hour before every performance must be allotted for the company in the theatre for preset.

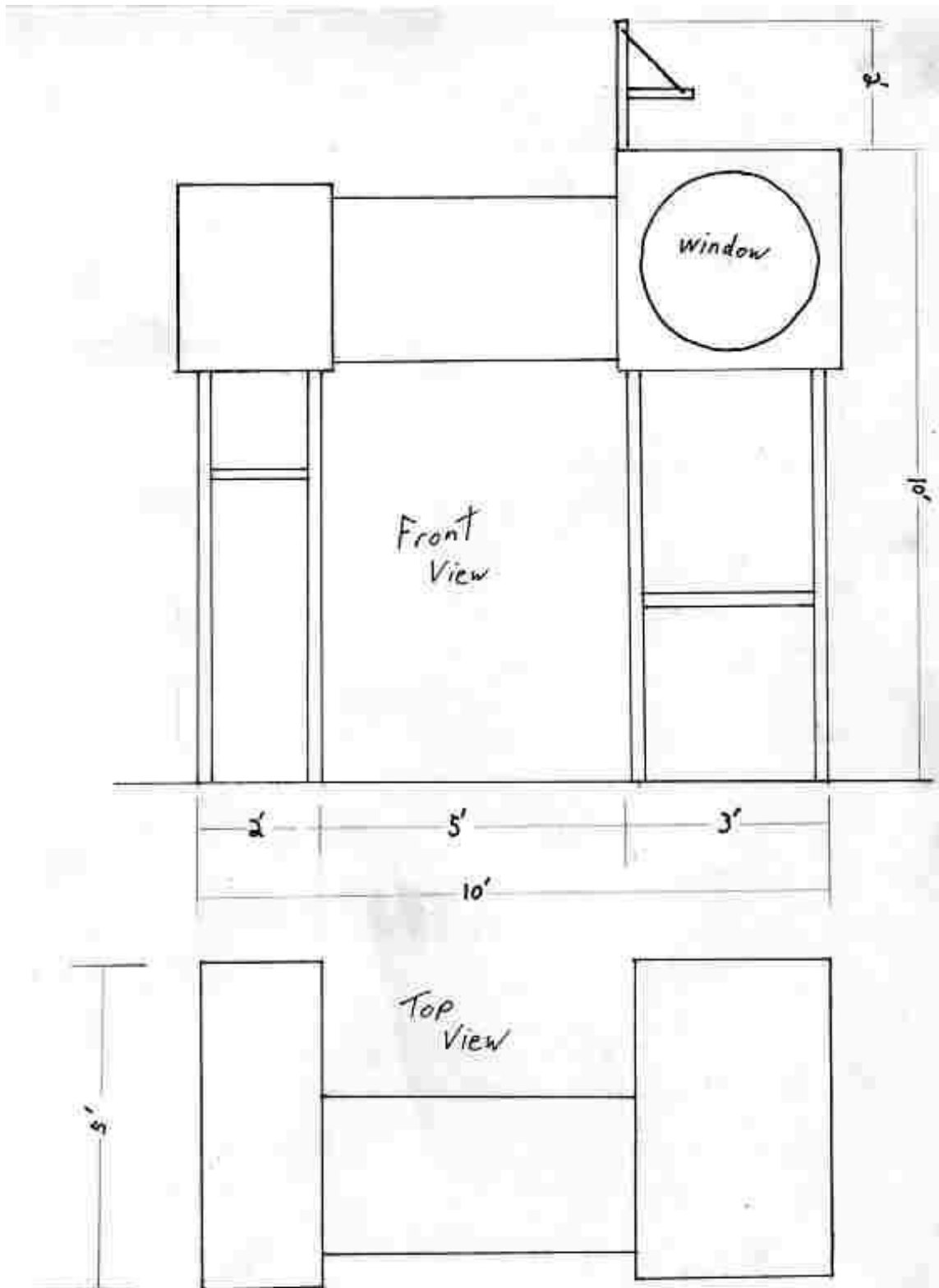
-There must be clean dressing rooms dedicated specifically for the 4 puppeteers, the PSM/LD and TD from the start date of the contract until the end of engagement.

The Venue must provide all ground plans, sections, elevations, grid plots, and equipment inventories a minimum of 60 days in advance of the engagement in either Vectorworks or AutoCAD and PDF formats (drawings) and inventories as a Word document or PDF.

The following drawing will give you an idea of the set.

THE TOOTH FAIRY
Technical Requirements Rider
Old Trout Puppet Workshop

9/14/10



THE TOOTH FAIRY
Technical Requirements Rider
Old Trout Puppet Workshop

9/14/10

Hospitality:

Water, Green tea, and coffee available throughout the day.

Morning of Load in: Coffee, bottled water and mineral water, Green Tea, muffins and fruit for five (5) people. Gluten free and lactose free options for two(2).

Lunch day of Load in: For five (5) touring crew, snack for one (1) actor.

(Items must include gluten free and lactose-free options for two (2)

Dinner day of Load in: For touring crew and actors six (6)
(Items must include gluten free and lactose-free options.)

Hospitality is only required the day of load-in.